

RICOH

RDC-i500 **IMAGE CAPTURING DEVICE**

Connecting to a Personal Computer Operation Manual

To ensure correct use of your camera, read this manual carefully before use. Keep the manual handy for future use.



Introduction

Thank you for purchasing a Ricoh RDC-i500. This manual explains the correct handling procedures and precautions for your camera. To ensure the best performance, please read the manual thoroughly before using the camera. Keep the manual handy for quick future reference.

Ricoh Co., Ltd.

Test Shots

Check that your camera is recording the images correctly by taking a number of test shots.

Copyright

Reproduction or alteration of copyrighted documents, magazines, music and other materials, other than for personal, home or similarly limited purposes, without the consent of the copyright holder is prohibited.

Exemption from Liability

Ricoh Co., Ltd. assumes no liability for failure to record or play back images caused by malfunction of the RDC-i500.

Warranty

This product is manufactured to local specifications and the warranty is valid within the country of purchase. Should the product fail or malfunction while you are abroad, the manufacturer assumes no responsibility for servicing the product locally or bearing the expenditure incurred therefor.

Radio Interference

Operating the RDC-i500 in the vicinity of other electronic equipment may adversely affect the performance of both devices. In particular, operating the camera close to a radio or television may lead to interference. If interference occurs, follow the procedures below.

- Move the camera as far away as possible from the TV, radio or other device
- Reorient the TV or radio antenna.
- Plug the devices into separate electrical outlets.

- This publication may not be reproduced in whole or part without the express written permission of Ricoh. ©2001 Ricoh Co., Ltd. All rights reserved.
- Ricoh reserves the right to change the contents of this publication without notice. Considerable care was taken in preparing this manual. If, however, you have questions about any part of the manual, or note mistakes or inaccuracies, please contact us at the address listed on the back cover.

Microsoft, MS and Windows are registered trademarks of Microsoft Corporation in the United States of America and other countries.

Macintosh is a registered trademark of Apple Computer, Inc., in the United States of America and other countries. CompactFlash is a registered trademark of SunDisk Corporation in the United States of America.

SmartMedia is a trademark of Toshiba Corporation.

Net Font is a registered trademark of Access Co., Ltd. in Japan.

All trademarked company and product names mentioned in this manual are the property of their respective owners.

How to Use the Operation Manuals

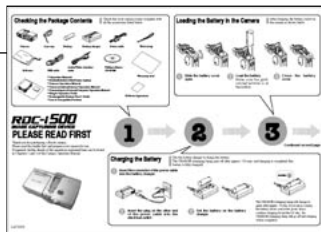
Five operation manuals are supplied with this camera.
Use each operation manual as shown below to suit the purpose.

Open the package



Read This Before Proceeding!

These instructions explain the procedure for checking the contents of the package and loading the battery to enable you to use the camera straightaway.



Basic operation

Camera Operation Manual

This manual explains in detail the preparations to take before using the camera together with the procedures for shooting and playback using the various functions.



Using the communication and Internet functions

Communication/Internet Operation Manual

This manual explains the procedures for transmitting images and using Internet functions.



Sending and receiving data using the camera and a PC

Connecting to a Personal Computer Operation Manual (this manual)

This manual explains the procedures for connecting the camera to a PC, transmitting images from the camera to the PC and operating the camera from the PC.



Simple Operation Guide

This guide explains the basic setting procedures of recording, transmitting images and transferring them to a PC.



CONTENTS

How to Use the Operation Manuals	1
--	---

Chapter 1 Getting Started

Using a Personal Computer	8
What You Can Do Using a PC	8
PC Environment	10
Connecting Methods	12
Installing the USB Driver	13
For Windows	13
For Macintosh	14
Installing the Application Software	15
For Windows	15
For Macintosh	17
Connecting the Camera to a PC	20
Connecting the Camera to the USB Port	20
Connecting the Camera to a Network	23
Making the Camera Settings	25
COM Port Settings for Windows 98/ME	25

Chapter 2 Viewing Images on a PC

Controlling the Camera from the Browser	28
Preparing the Camera	28
Opening the Camera's Homepage on the Browser	28
Displaying Thumbnail Images	31
Viewing Thumbnail Images	31
Displaying File Properties	33
Checking the Data	34
Saving Data in the PC	36
Displaying Thumbnail Images with Capture Guide Titles	38
Viewing Thumbnail Images with Guide List	38
Displaying File Properties	40
Displaying an Image in its Actual Size	41
Saving Data in the PC	42

Chapter 3 Recording Images with the Camera

Shooting Still Images	44
Shooting	44
Checking the Image	47
Saving the Image	48
Shooting Text Files	49
Shooting	49
Saving the Image	52
Recording Motion Pictures	53
Recording	53
Saving the Motion Picture	56
Recording a Voice Memo	57
Recording	57
Saving the Voice Memo File	60

Chapter 4 Changing the Camera Settings

Address Book Settings	62
Displaying the Address Book	62
Entering a New Address	63
Editing an Address	64
Deleting an Address	65
Saving the Address Book in the PC	65
Transferring the Address Book Stored in the PC to the Camera	66
User Information Settings	68
Modem Settings	70
E-Mail Settings	72
Preset Memo Settings	74
Displaying the Preset Memos	74
Creating a New Preset Memo	75
Editing a Preset Memo	76
Deleting a Preset Memo	77
Setting Signatures	78
Displaying the List of the Signatures	78
Selecting the Signature to be Used	79
Adding New Signatures	80
Editing a Signature	81
Deleting a Signature	82
Dial-Up Account Settings	83
Displaying the Dial-Up Accounts	83
Entering a New Dial-Up Account	84
Editing a Dial-Up Account	85
Deleting a Dial-Up Account	86

Direct Upload Settings	87
Displaying the Direct Upload Dial-Up Accounts	87
Selecting a Direct Upload Dial-Up Account	88
Setting the Send-To Folder Name and Server	89
Quick Send Settings	90
Displaying the Quick Send Dial-Up Accounts	90
Selecting a Quick Send Dial-Up Account	91
Selecting a Quick Send Send-To Account	92
Selecting the Size of the Image to be Sent by Quick Send	93
Setting FTP Upload	94
Displaying the FTP Upload Dial-Up Accounts	94
Selecting an FTP Upload Dial-Up Account	95
Setting a Server for FTP Upload	96
Making a Backup/Restoring the Camera Settings	97
Saving the Camera Settings in the PC	97
Restoring the Backup Settings to the Camera	98

Chapter 5 Using JOB Navi. Func. Image Capture Guide List

JOB Navi. Func. Image Capture Guide List	102
Role of Guide List	102
Creating a Guide List	102
Using the Guide List	103
Using the Image Capture Guide List on Excel	104
Creating a Guide List	104
Recording Images Using the Guide List	106
Pasting the Recorded Images to the Table	107
Using the Image Capture Guide List on Word	110
Creating a Guide List	110
Recording Images Using the Guide List	112
Pasting the Recorded Images into a Document	112
Setting the Image Capture Guide List on the Browser	114
Displaying the Guide Lists	114
Creating a New Guide List	116
Editing the Guide List	118
Deleting a Guide List	122
Saving the Guide List on the PC	123
Transferring the Guide List Saved in the PC to the Camera	124
Setting the Image Capture Guide List Independently on the Camera	126
Rearranging the Image List	126
Deleting a Guide List	127

Chapter 6 Using the Extension Functions

Using the RDC-i Explorer Plug-In	130
Using the RDC-i Mounter	133
Making a Backup File of the Camera Settings	136
Making a Backup File	136
Restoring the Backup Settings to the Camera	138
Using the TWAIN Function	140
For Windows	140
For Macintosh	142

Chapter 7 Setting the Receiving PC for Direct Upload

Setting the Receiving PC for Direct Upload	146
For Windows	146
For Macintosh	151

Appendix

Camera Settings When Connected to a PC	156
Setting the PC Connection Environment	156
Setting the Network Environment	158
Error Messages	160
Error Messages Displayed on the Web Browser	160
Other Error Messages	163
Troubleshooting	166
Restoring the Device Which Could not be Used anymore	166
Selecting "Never dial a connection"	167
Checking the Proxy Server	168
Installing the Dial-Up Adapter	169
Index	170
Functional Index	170
Alphabetical Index	174



Saving the Camera's Homepage	30
Image Capture Guide List Display	128
Using the Microsoft Power Point Presentation Data	132

At the end of this manual troubleshooting for error messages, alphabetical index and index by functions are listed for your convenience.

Refer to the most up-to-date information included in the [Readme] file in the CD-ROM, if necessary.

Chapter 1

Getting Started

Using a Personal Computer	8
What You Can Do Using a PC	8
PC Environment	10
Connecting Methods	12
Installing the USB Driver	13
For Windows	13
For Macintosh	14
Installing the Application	
Software	15
For Windows	15
For Macintosh	17
Connecting the Camera to a	
PC	20
Connecting the Camera to the	
USB Port	20
Connecting the Camera to a	
Network	23
Making the Camera Settings	25
COM Port Settings for Windows	
98/ME	25

Using a Personal Computer

The range of available applications can be greatly increased by connecting the camera to a PC.

What You Can Do Using a PC

By connecting the camera to a PC, you can take advantage of the following functions.

■ Using the Camera Control Functions from the Browser

By accessing the camera's homepage from the PC Web browser, you can use the following functions.

● Viewing and Saving Images

This function enables you to view images recorded in the camera's storage memory (internal memory or CF card) on the PC screen. You can view the images in a thumbnail display or in their actual size. Simple procedures also enable you to save a displayed image (or voice memo or motion picture) as a file on the hard disk or external disk drive of the PC.

● Recording Images While Controlling the Camera from the PC

You can control the camera from the PC to record still images, text files, motion pictures and voice memos.

● Setting the Camera from the Large Screen

You can make the various camera settings, such as Address Book and Dial-Up settings, using the large screen of the PC. You can also make a backup file of all the camera settings as a PC file.

- See** • To use this function, after installing the software and connecting the camera according to the instructions in the latter half of the chapter, refer to Chapter 2 "Viewing Images on a PC", Chapter 3 "Recording Images with the Camera" and Chapter 4 "Changing the Camera Settings".

■ Using the JOB Navi. Func. Image Capture Guide List Tool Kit

If you install the JOB Navi. Func. Image Capture Guide List Tool Kit, you can create a capture guide list based on a Microsoft Excel or Microsoft Word table or document and transfer it to the camera using the extended functions. After shooting the images with the camera according to the guide list, open the original table or document again and the images will be incorporated.

The JOB Navi. Func. Image Capture Guide List Tool Kit can only be used on a PC running Windows.

- **See** • To use the Image Capture Guide List Tool Kit, after installing the software and connecting the camera according to the instructions in the latter half of this chapter, refer to Chapter 5 “Using JOB Navi. Func. Image Capture Guide List”.

■ Using the RDC-i Explorer Plug-In / RDC-i Mounter

The RDC-i Explorer Plug-In (Windows) / RDC-i Mounter (Macintosh) are extended functions for copying images stored in the camera onto the hard disk of the PC, or copying image files or setting files created on the PC in the camera.

Function such as making a backup file of all the camera settings on the PC is also available.

- **See** • To use the RDC-i Explorer Plug-In / RDC-i Mounter functions, after installing the software and connecting the camera according to the instructions in the latter half of this chapter, refer to Chapter 6 “Using the Extension Functions”.

■ Using the TWAIN Function

If you install a TWAIN driver for this camera, you can call up the images recorded in the camera’s storage memory (internal memory or CF card) directly from the graphic application software compatible with TWAIN onto the screen.

- **See** • To use the TWAIN function, after installing the software and connecting the camera according to the instructions in the latter half of this chapter, refer to Chapter 6 “Using the Extension Functions”.

■ Setting the PC for Direct Upload

To use the [DIRECT UPLOAD] function to send images directly to a specific PC from outside the company, the PC must be set to receive the images. This manual explains the settings to be made.

- **See** • To set the receiving PC, after installing the software and connecting the camera according to the instructions in the latter half of this chapter, refer to Chapter 7 “Setting the Receiving PC for Direct Upload”.

PC Environment

To connect the camera to a PC, the PC must meet the following conditions.

■ For a PC running Windows

- One of the following Windows programs must be installed.
 - Microsoft Windows® 98
 - Microsoft Windows® 98 Second Edition
 - Microsoft Windows® Me
 - Microsoft Windows® 2000
- USB port:

When you use the USB cable to connect the camera with a PC, the PC must be factory equipped with a USB port guaranteed by the PC manufacturer.
- Memory:
 - Windows 98/SE: 32 MB or more (recommended 96 MB or more)
 - Windows Me: 32 MB or more (recommended 96 MB or more)
 - Windows 2000: 128 MB or more (recommended 256 MB or more)
- Hard disk space: 6 MB or more
- To access the camera from the Web browser, Internet Explorer (version 5), Netscape Communicator (version 4.7) or other Web browser must be installed.
- To use the Image Capture Guide List Tool Kit, Microsoft Office 97 or 2000 (Microsoft Excel, Microsoft Word) must be installed.

- Note**
- To use the TWAIN function, application software compatible with TWAIN must be installed.
 - The explanations in this manual are based on Windows 98. The displays may differ slightly depending on the Windows version.
 - The display may differ depending on the kind or version of the browser.

■ For Macintosh

- If you use the USB cable to connect the camera to a Macintosh equipped with a standard USB port, a MacOS 8.6~9.1 operating system must be installed.
- CPU: PowerPC
- Memory: 96 MB or more
- Hard disk space: 6 MB or more



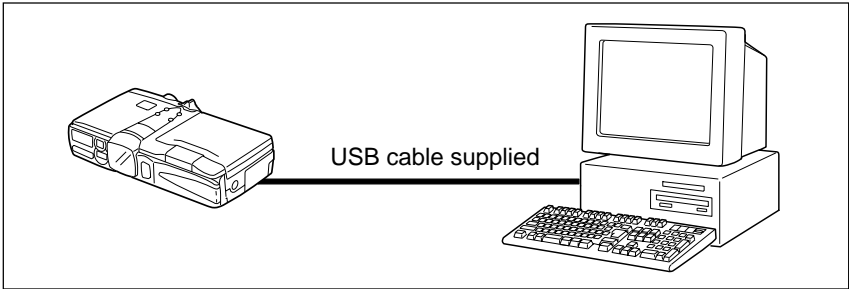
- To access the camera from the Web browser, Internet Explorer (version 5), Netscape Communicator (version 4.7) or other Web browser must be installed.
- To use the TWAIN function, application software compatible with TWAIN is required.
- If the Mac operating system is earlier than OS9, Apple Remote Access (ARA) is required to set the PC for Direct Upload.
- The explanations in this manual are based on OS9. The displays may differ slightly depending on the OS version.
- The display may differ depending on the kind or version of the browser.

Connecting Methods

The camera can be connected to the PC by one of the following methods. Decide which method you will use. (Connect the camera after the software has been installed.)

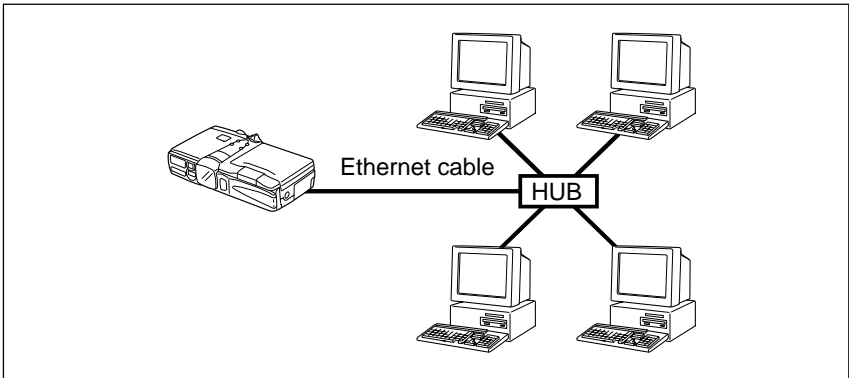
■ Connecting the Camera to the USB Port

This method is for connecting the camera to the PC using the USB cable, supplied with the camera.



■ Connecting the Camera to a Network

You can connect the camera to an existing network (LAN by Ethernet, etc.) using the recommended LAN card. This method is useful when using the camera on several PCs or when using several cameras.



Installing the USB Driver

This section explains how to install the software for connecting the camera to the PC by USB cable.

Follow these instructions only if connecting the camera to the PC by USB cable.



- Do not connect the camera to the PC until the software has been installed, otherwise installation will not proceed smoothly. When you have established a connection, click [Cancel] on a plug & play window that appears and remove the USB cable.

For Windows

If you are using Windows, install the USB driver as follows.

1 Turn the PC on.

When Windows is up and running, proceed to the next step.

2 Insert the CD-ROM provided in the CD-ROM drive of the PC.

3 Double-click on [My Computer] and then double-click on the CD-ROM. Next double-click on the [USB_Drvs] folder.

4 Double-click on [Setup].



Setup

Installation of the software for connecting the camera by USB cable will start. Follow the instructions displayed on the screen. When installation is completed, proceed to the next step.

- **Note** • Updated information on installation is provided in the [Readme] file in the [Usb drvs] folders. If necessary, refer to this information.
- When you connect/remove the USB cable or cancel installation before installing the USB driver, the cable may be recognized as an unknown device for a PC. Refer to page 166 “Troubleshooting” for troubleshooting.

For Macintosh

If you are using a Macintosh, install the USB driver as follows.

① Turn the PC on.

When the Macintosh is up and running, proceed to the next step.

② Insert the CD-ROM provided in the CD-ROM drive of the PC.

③ Double-click on the CD-ROM. Next double-click on the [Usb driver] folder, and then double-click on [RDC-i USB Inst].



Installation of the software for connecting the camera to the PC by USB cable will start. Follow the instructions displayed on the screen. When installation is completed, proceed to the next step.

- **Note** • Updated information on installation is provided in the [Readme] file. If necessary, refer to this information.
- This USB driver cannot be used with Mac OS-X.

Installing the Application Software

This section explains how to install the various application software for using the camera.

For Windows

Install the application software for Windows.

1

Getting Started

■ Installing RDC-i Software

- Note** • This procedure will install the following items: RDC-i Explorer Plug-In, RDC-i Direct upload, RDC-i virtual server process, RDC-i TWAIN Driver, RDC-i Signature transfer. Use the custom installation to install only the specified items. Note that the RDC-i Signature transfer is a software exclusive for RDC-i 700 camera.

- 1 Check that the PC is turned on.
- 2 Check that the CD-ROM supplied is inserted in the CD-ROM drive of the PC.
- 3 Double-click on [My Computer] and then double-click on the CD-ROM. Next, double-click on the [RDC-i Software] folder and double-click on the [Disk1] folder.
- 4 Double-click on [Setup].



Setup

Installation of the RDC-i Software will start. Follow the instructions displayed on the screen.

- Important Note** • When you have finished installation shown above, the software “RDC-i virtual server process” will be launched automatically everytime Windows runs and the corresponding icon will be displayed on the task bar. When you have exited this software in case of connecting with a USB cable, take note that the communication between the camera and PC will not be established.

■ Installing QuickTime

- Note** • QuickTime is software for viewing a motion picture recorded with the camera.
- If QuickTime 4 has already been installed on the PC, this procedure is not necessary.

- ① Check that the PC is turned on.
- ② Check that the CD-ROM supplied is inserted in the CD-ROM drive of the PC.
- ③ Double-click on [My Computer] and then double-click on the CD-ROM. Next, double click on the [QuickTime] folder.
- ④ Double-click on [QuickTime Installer].



Installation of the QuickTime software will start. Follow the instructions displayed on the screen. Install the QuickTime and Web browser plug-in software for your Web browser.

■ Installing JOB Navi. Func. Image Capture Guide List Tool Kit

- Note** • For details of the image capture guide list tool kit, refer to page 8 "Using the JOB Navi. Func. Image Capture Guide List Tool Kit".

- ① Check that the PC is turned on.
- ② Check that the CD-ROM supplied is inserted in the CD-ROM drive of the PC.
- ③ Double-click on [My Computer] and then double-click on the CD-ROM. Next, double-click on the [Image Capture Guide] folder.

4 Double-click on [Setup].



The Image Capture Guide List Tool Kit installer will start up. Follow the instructions displayed on the screen.

Note • You can choose whichever kit (Excel or Word) you need.

For Macintosh

This section explains how to install the application software for Macintosh.

■ Installing the RDC-i Mounter

- 1 Check that the PC is turned on.
- 2 Check that the CD-ROM supplied is inserted in the CD-ROM drive of the PC.
- 3 Double-click on the CD-ROM, then double click on [RDC-i Mounter Inst].



Installation of the RDC-i Mounter software will start. Follow the instructions displayed on the screen.

■ Installing the RDC-i TWAIN Driver

- 1 Check that the PC is turned on.
- 2 Check that the CD-ROM supplied is inserted in the CD-ROM drive of the PC.

- 3 Double-click on the CD-ROM, then double-click on [RDC-i TWAIN Inst].**



Installation of the TWAIN driver will start. Follow the instructions displayed on the screen.

■ Installing QuickTime

- Note**
- QuickTime is a software required for viewing a motion picture file with a camera.
 - This procedure is not required if QuickTime 4 has already been installed on your Macintosh.

- 1 Check that the PC is turned on.**
- 2 Check that the CD-ROM supplied is inserted in the CD-ROM drive of the PC.**
- 3 Double-click on the CD-ROM, then double-click on the [QuickTime] folder.**
- 4 Double-click on [QuickTime Installer].**



Installation of QuickTime will start. Follow the instructions displayed on the screen.

■ Installing RDC-i Direct upload



- RDC-i Direct upload is software for preparing and setting the PC that will receive direct upload from the camera.

- ① Check that the PC is turned on.
- ② Check that the provided CD-ROM is placed in the CD-ROM drive of the PC.
- ③ Double-click on the CD-ROM, then double-click on the [RDC-i Direct Upload].
- ④ Double-click on the CD-ROM, then double-click on [RDC-i Direct Inst].

The installation of Direct upload will start. Follow the instructions displayed on the screen.



RDC-i Direct Inst

Connecting the Camera to a PC

This section explains how to connect the camera to a PC.

Connecting the Camera to the USB Port

This method is for connecting the camera to the PC using the USB cable.

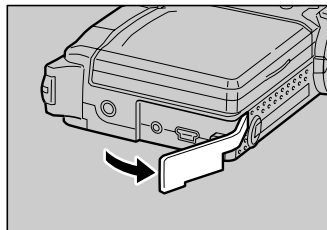


- Make sure that the USB driver is installed before connecting to a USB port.
- The flash lamp (red) on the camera blinks while data is being transmitted. Do not disconnect the cable or turn the camera off while data is being transmitted between the camera and the PC as the camera or PC may be adversely affected.
- After connecting the camera to a PC, you are advised to use an AC adapter when using the camera and avoid powering the camera by the battery. Particularly if you are handling non-compressed files, motion pictures or other large files, transmission takes a long time. If the power fails during transmission, the camera or PC may be adversely affected.
- Connecting the camera via the USB hub may result in the camera not functioning properly. If possible, you are advised not to use the USB hub.
- The camera will not operate on power supplied from the USB port.

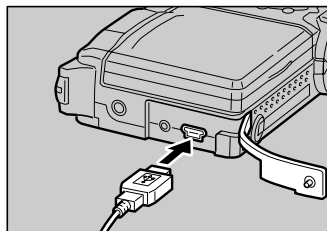
■ Connecting the Camera by USB Cable (For Windows)

You can connect the camera to a PC running Windows using the USB cable supplied with the camera.

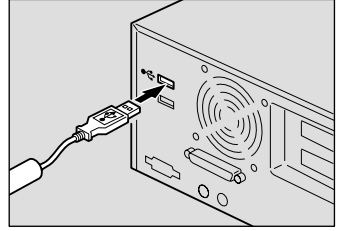
- 1 Open the terminal cover on the left side of the camera.



- 2 Insert the smaller connector on one end of the USB cable into the DIGITAL (USB) terminal of the camera.



- 3** Insert the connector on the other end of the cable into the USB port of the PC.



- 4** Turn the camera on.

The PC will automatically detect the equipment which has been connected and operate accordingly. If a message is displayed, follow the instructions on the screen.

USB connection is completed.

Before disconnecting the USB cable, check that data transmission is not performed between a camera and a PC, turn off the camera and disconnect the USB cable.

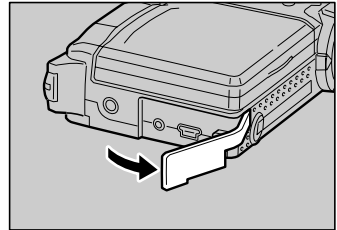


- For Windows Me user, make sure to give a time interval of more than 10-seconds when:
 - Turning off and then on the camera
 - Setting the mode dial from the modes other than Communication mode to Communication mode.
 - Inserting and removing the USB cable
- Do not remove the RDC-i virtual server process installed in Windows Start-up item folder. The USB connection can not be made without it.

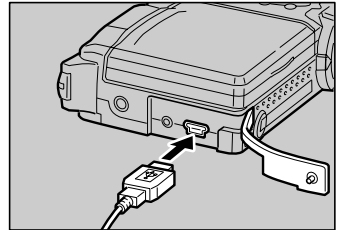
■ For Macintosh

You can connect the camera to a Macintosh using the USB cable supplied with the camera.

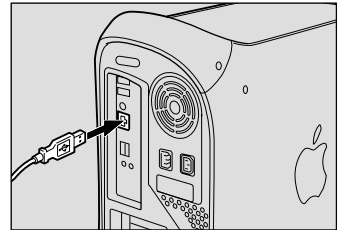
- 1 **Open the terminal cover on the leftside of the camera.**



- 2 **Insert the smaller connector on one end of the USB cable supplied into the DIGITAL (USB) terminal of the camera.**



- 3 **Insert the connector on the other end of the cable into the USB port of the PC.**



- 4 **Turn the camera on.**

The PC will automatically detect the equipment which has been connected and operate accordingly. If a message is displayed, follow the instructions on the screen.

Connection by USB cable is completed.

Before disconnecting the USB cable, perform the following steps

Check that data transmission is not performed between a camera and a PC.

Turn off the camera.

Disconnect the USB cable.

Connecting the Camera to a Network

You can connect the camera to an existing internal network or household network (LAN using Ethernet, etc.).



- This camera is compatible with a 10BASE-T LAN (Ethernet).
- To connect the camera to a LAN, it is necessary to purchase a LAN connection CF card. For details of equipment checked or recommended by Ricoh, refer to the separate list of Compatible Products. Updated information can be found in Ricoh's homepage on the Internet (noted at end of manual).
- Do not remove the cable or turn the camera off while data is being transmitted between the camera and the PC as the camera or PC may be adversely affected. (When the camera is connected to LAN, the flash lamp (red) will not flash during data communication.)
- When you use the camera by connecting it to the PC, you are advised to use an AC adapter and avoid powering the camera by the battery. Particularly if you are handling non-compressed files, motion pictures or other large files, transmission will take a long time. If the power fails during transmission, the camera or the PC may be adversely affected.
- Do not touch the cable terminal of the LAN connection CF card.
- Do not connect the camera to a LAN and a USB cable simultaneously. The camera or PC may be adversely affected.

■ Requirements

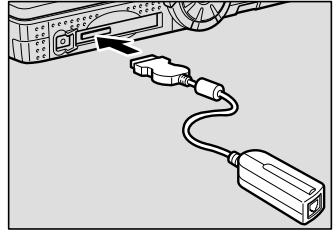
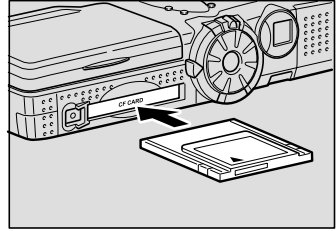
- LAN connection CF card suitable for the network to which the camera will be connected
- Connection cable



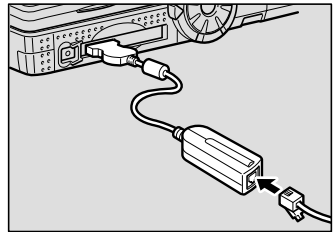
- If you use this method to connect the camera to a PC, the CF card slot will be used for the LAN connection CF card. You will therefore be unable to view images recorded on the CF card or send them to the PC. If you use this method, record the images in the internal memory.

■ Connecting Procedure

- 1 Check that the PC and the camera are turned off.
- 2 Insert the LAN connection CF card into the CF card slot of the camera.
- 3 Insert the connection cable into the LAN connection CF card.

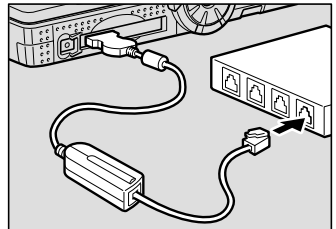


- 4 Insert the connector on the other end of the connection cable into the connector of the LAN cable.



- 5 Insert the connector on the other end of the LAN cable into the free terminal of the LAN hub.

Connection of the camera to the LAN is now completed.



Making the Camera Settings

Normally, when the camera is connected to a PC, you can immediately access the camera using the Web browser or the PC. This is because various general settings have been made for the factory default settings.

However, depending on the PC or LAN used, operation may not proceed smoothly with the settings as they are.

In this case, refer to the appendix “Camera Settings When Connected to a PC” (p.156) and change the settings to suit the PC or LAN used. (As a certain amount of knowledge about the LAN is required, you are recommended to consult the person in charge of the network before making any changes.)

COM Port Settings for Windows 98/ME

The USB driver for Windows treats the camera as equipment that uses the COM port virtually.

For Windows 98/Me, if the COM port conflicts with other equipment, the camera may fail to be detected even when the driver has been correctly installed.

In this case, change the COM port used by the following procedure.

- ① Connect the camera to the PC using the USB cable and turn the camera on.**
- ② Start the device manager.**
Select [Settings] → [Control Panel] from the [Start] button. Double click on the [System] icon in the window that opens. Select the [Device Manager] tab from the [System Properties] dialog box, and open [Ports (COM/LPT)] from the list.
- ③ Set [RICOH Camera Port] of [Ports (COM/LPT)] and click on [Properties].**
- ④ Change to another COM number (COM 5 - 9) at the [Port Select] screen.**
An [*] will be attached to the port that is used by the camera.

Chapter 2

Viewing Images on a PC

Controlling the Camera from the Browser	28
Preparing the Camera	28
Opening the Camera's Homepage on the Browser	28
Displaying Thumbnail Images	31
Viewing Thumbnail Images	31
Displaying File Properties	33
Checking the Data	34
Saving Data in the PC	36
Displaying Thumbnail Images with Capture Guide Titles	38
Viewing Thumbnail Images with Guide List	38
Displaying File Properties	40
Displaying an Image in its Actual Size	41
Saving Data in the PC	42

Controlling the Camera from the Browser

You can access the camera's homepage from the PC using the Web browser and view data recorded in the camera or make various camera settings. This section explains how to access the homepage.

Preparing the Camera

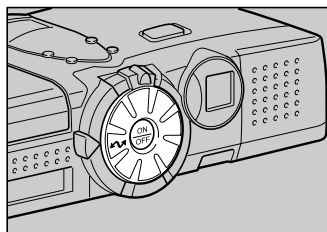
To perform an operation when the camera is connected to a PC, set the mode dial to [M] (PC).

1 Check that the camera and PC are properly connected.

See • P.20 “Connecting the Camera to a PC”

2 Check that the camera and the PC are turned on.

3 Set the mode dial to [M] (PC).



Opening the Camera's Homepage on the Browser

Start up the Internet Explorer or Netscape Communicator browser and open the camera's built-in homepage.



- When you can not connect the camera from the Web browser, check the proxy server setting. → P. 168 “Checking the Proxy Server”.
- When the dial-up settings are made on a PC, the screen for selecting [Work offline]/[Retry] may be displayed.
Cancel the automatic dial-up setting of the browser, and then select [Retry]. → P. 167 “Selecting ‘Never dial a connection’”.

❶ Start up the browser on the PC.

❷ Check that the [IP address] is displayed on the camera's LCD monitor.

The address is displayed in the form of [xxx.xxx.xxx.xxx] (figures separated by dots).

❸ Enter [http://] in the [Address] area at the top of the PC screen, then enter the figures of the IP address in step ❷.

For example, if the IP address is [127.0.0.1], enter the address as follows.



If the IP address is [192.168.181.240], enter the address as follows.



- Note** • If using Netscape Communicator, enter the address in the [Location] area.

4 Press the [Enter] key (or [Return] key).

The following screen will be displayed.



This is the camera's homepage. By selecting functions from this screen, you can use the PC to view images stored in the camera and control the various camera functions.



Saving the Camera's Homepage

To view the camera's homepage, you must input the number. By saving the homepage on the browser, you can open the page easily, simply by selecting the saved page.

If you are using a LAN connection, however, you must change the camera's IP address to a fixed IP address. Due to the factory default settings, the camera is given a temporary IP address (not fixed) from the LAN equipment by DHCP, so it may be assigned a different IP address each time it is connected to the LAN. This means that even if the homepage is saved, it may not necessarily be displayed using the same number next time. Instructions for fixing the camera's IP address are explained in "Setting the Network Environment" (p.158) in the appendix, "Camera Settings When Connected to a PC".

Saving the Homepage

If you are using Internet Explorer, select [Add to Favorites] from the [Favorites] menu. Then next time, this page can be displayed simply by selecting [RICOH RDC-i500] from the [Favorites] menu.

If you are using Netscape Communicator, select [Add Bookmark] from the [Bookmarks] menu. Then next time, this page can be displayed simply by selecting [RICOH RDC-i500] from the [Bookmarks] menu.

Displaying Thumbnail Images

This function enables you to view still images, motion pictures, voice memos, etc. recorded with the camera on the PC screen.

Viewing Thumbnail Images

You can display all the data recorded in the camera (still images, motion pictures, voice memos) in thumbnail form. There are two ways of displaying thumbnail images, normal [THUMBNAIL] and [FILE PROPERTY] which displays more detailed information.

- 1 Check that the camera is properly connected to the PC, that the camera and the PC are turned on, and that the camera's mode dial is set to [↖↗].
- 2 Start the browser from the PC, input the IP address and display the camera's homepage.
 - See • P.28 "Opening the Camera's Homepage on the Browser"
- 3 Click on [VIEW THUMBNAIL IMAGES].



After a short while, the data recorded in the internal memory will be displayed (it may take a while for the data to be transmitted from the camera).







4 If you wish to change the storage memory, click on [IN] or [CF CARD].

If you wish to view images in another folder, click on the desired folder from the list of folders on the left of the screen.

Select storage memory
([CF] is dimmed when the
CF card is not available.)
Folder list



The title and the following symbols indicating file type are displayed under the data.

-  : Still image
-  : Text (TIFF file) and still image (non-compressed TIFF file)
-  : Motion Picture
-  : Voice Memo

20 images can be displayed on one page. If there are more than 20 images, you can change the display by clicking on [NEXT 20] or [PRE. 20].

If the data cannot be displayed as a thumbnail, the symbol indicating the type of file will be displayed in the image area.

You can perform various operations, explained in the following pages, from this screen.

- Note** • You can return to the first screen at any time by clicking on [TOP PAGE] at the top of the screen. You can also display the Ricoh Web page by clicking on [RICOH].

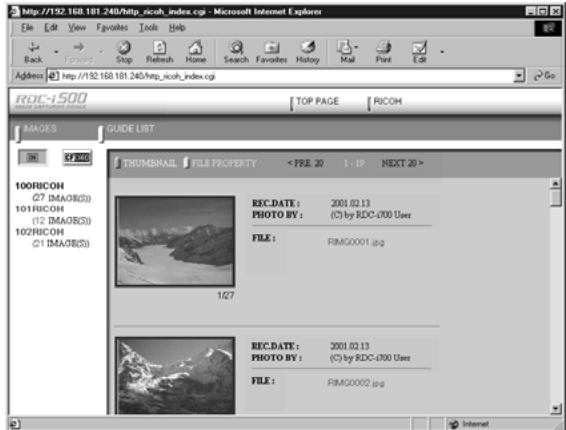
Displaying File Properties

Perform the following procedure if you wish to check the detailed information relating to the data, for example, the shooting date or photographer.

- 1 Click on [FILE PROPERTY].



The thumbnail will be displayed in the following form.



- Note**
- If you have registered a plug-in that is compatible with the voice memos or recorded memos in the browser, you can display and play back files by clicking on the file name of the voice memo on the screen.

2

Viewing Images on a PC

Checking the Data

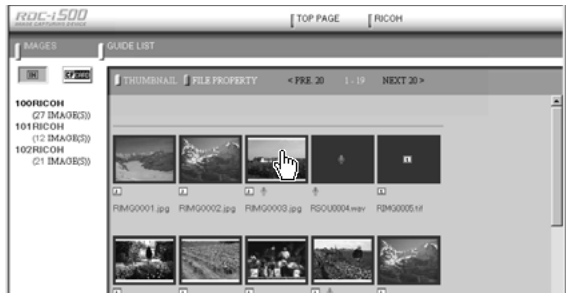
This function is for displaying and playing back data such as still images, text files, motion pictures and voice memos in the thumbnail display.

■ Still Images

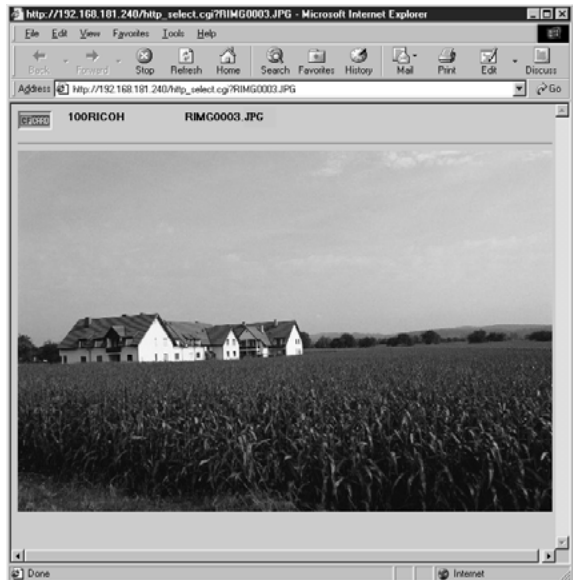
Perform the following procedure if you wish to view a still image in its actual size (1 pixel of the image corresponds to 1 pixel of the screen).

① Click on the image you wish to view.

Click on the image in the same way for FILE PROPERTY.



The image will be displayed in a new window in its actual size.



② When you have finished viewing, click on the close box.

The window will be closed.

■ Data Other Than Still Images

Perform the following procedure if you wish to display or play back data such as text files, motion pictures or voice memos.



- The QuickTime plug-in software is needed to display and play back data other than normal still images (text, motion pictures, voice memos and non-compressed still images).

① Click on the data icon you wish to check.

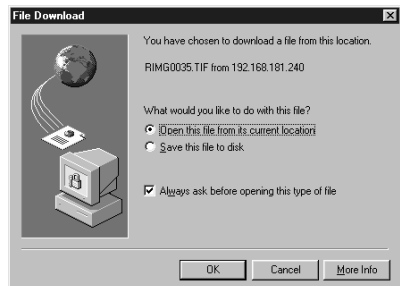
Click on the icon in the same way for FILE PROPERTY.



The plug-in software compatible with the selected data will automatically start up and the data will be displayed or played back.



- The screen shown below may be displayed, depending on the browser settings. To open data such as text files, voice memos or motion pictures, select [Open this file from its current location], and to make a backup file, select [Save this file to disk].



Saving Data in the PC

This function enables you to save data such as images, text files, motion pictures and voice memos as files in the PC hard disk, etc.

- Note**
- The [Save] function explained here is not a camera function, but a browser function. For further details, refer to the HELP function or operation manual for your browser.
 - Instructions for saving the non-compressed still images are given in “Data Other Than Still Images”(P.37).

■ Still Images

- 1 In the case of a thumbnail display, click on the image you wish to save and display the image in its actual size.
- 2 [For Windows] Move the mouse pointer to the image and click the right mouse button.
[For Macintosh] Move the mouse pointer to the image and click while pressing the [control] key.

The menu will be displayed in the position of the mouse pointer.



- 3 Click on [Save Picture As...].
If you are using Netscape Communicator, click on [Save As...].
The dialog box for specifying the location and file name will be displayed.
- 4 Specify the location and file name and then click on [Save].
The image will be saved in the PC.

- **Note** • Still images can be saved in JPEG files. In the case of Windows, however, you can also save images in BMP format. (Change the file format by [File Type] in the dialog box.)

■ Data Other Than Still Images

- 1 **[For Windows]** Move the mouse pointer to the data (symbol) you wish to save and click the right mouse button.
[For Macintosh] Move the mouse pointer to the data (symbol) you wish to save and click while pressing the [control] key.
The menu will be displayed in the position of the mouse pointer.



- 2 **Click on [Save Target As..].**
If you are using Netscape Communicator, click on [Save Link As..].
The dialog box for specifying the location and file name will be displayed.
- 3 **Specify the location and file name and then click on [Save].**
If you are using Netscape Communicator, be sure to select the source under [Save in].
The selected data will be saved in the PC.

- **Note** • Text files and non-compressed files are saved as TIFF files, motion pictures as AVI files, and voice memos as WAV data.

Displaying Thumbnail Images with Capture Guide Titles

This operation enables you to view images recorded according to an Image Capture Guide List (hereafter referred to as Guide List).

- Note** • Instructions for creating the Guide List or shooting operation from the camera's homepage, refer to chapter 5 "Using JOB Navi. Image Capture Guide List".

Viewing Thumbnail Images with Guide List

You can display the images with Guide List recorded with the camera in thumbnail form. There are two types of thumbnail display, normal THUMBNAIL and FILE PROPERTY which displays the information in more detail.

- 1 Check that the camera is properly connected to the PC, that the camera and PC are turned on, and that the camera's mode dial is set to [V].
- 2 Start the browser from the PC, input the IP address and display the camera's home page.

See • P.28 "Opening the Camera Homepage on the Browser"

- 3 Click on [VIEW IMAGES with CAPTURE GUIDE TITLE].



After a short while, the data recorded in the internal memory will be displayed in thumbnail form (it may take a while for the data to be transmitted from the camera).



- ④ If you wish to change the storage memory, click on [IN] or [CF CARD].
If you wish to view images on a different Guide List, click on the desired list from the Guide List on the left of the screen.

Select storage memory
([CF] is dimmed when the
CF card is not available.)

Guide Lists



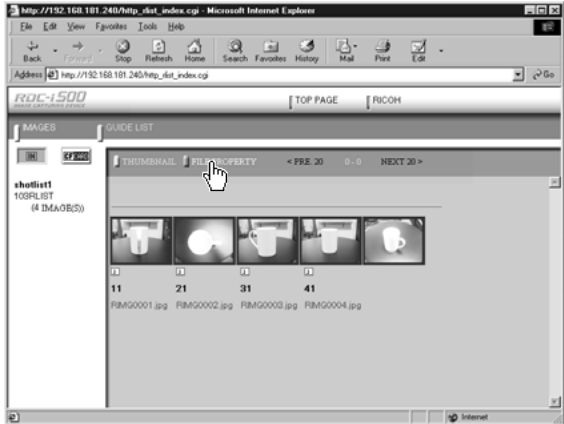
20 images can be displayed on one page. If there are more than 20 images, you can change the display by clicking on [NEXT 20] or [PRE. 20].

You can perform various operations, explained in the following pages, from this screen.

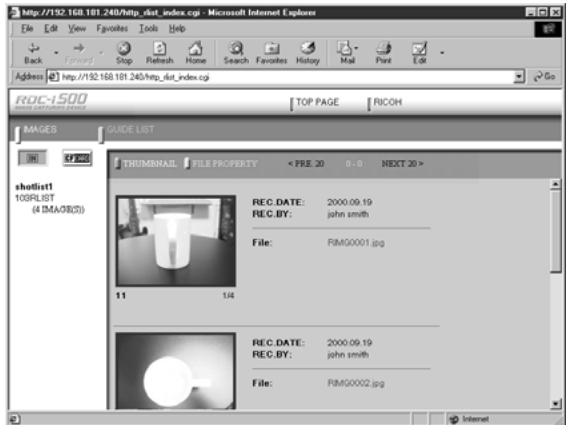
Displaying File Properties

If you wish to check detailed information relating to the images, such as the shooting date or photographer, perform the following procedure.

- 1 Click on [FILE PROPERTY].



A thumbnail display in the following form will be displayed.



Displaying an Image in its Actual Size

If you wish to view an image in its actual size (1 pixel of the image corresponds to 1 pixel of the screen), perform the following procedure.

1 Click on the image you wish to view.

Click on the image in the same way for FILE PROPERTY.



2

Viewing Images on a PC

The image will be displayed in its actual size in a new window.

The plug-in software will be started to display the non-compressed still image.



2 When you have finished viewing, click on the close box.

The window will be closed.

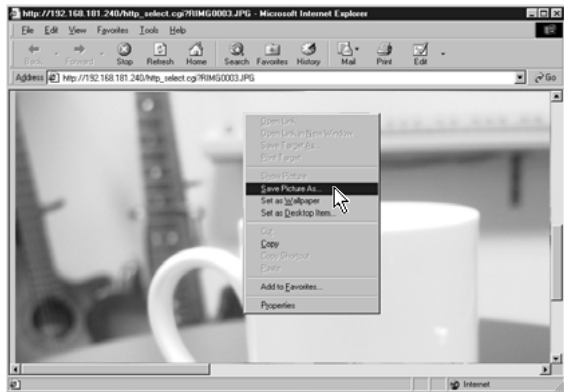
Saving Data in the PC

This function enables you to save images displayed in thumbnail form as image files on the PC hard disk, etc.



- The functions explained here are browser functions and not camera functions. For further details, refer to the HELP function or operation manual for your browser.
- Instructions for saving non-compressed files are given in “Data Other Than Still Images” (P.37).

- 1 In the case of a thumbnail display, click on the image you wish to save and display the image in its actual size.**
- 2 [For Windows] Move the mouse pointer to the image and click the right mouse button.
[For Macintosh] Move the mouse pointer to the image and click while pressing the [control] key.**
The menu will be displayed in the position of the mouse pointer.



- 3 Click on [Save Picture As...].**

If you are using Netscape Communicator, click on [Save Image As...].
The dialog box for specifying the location and file name will be displayed.

- 4 Specify the location and file name and then click on [Save].**

The image will be saved in the PC.



- Images are saved as JPEG files. In the case of Windows, however, images can be saved in BMP format. (Change the file format by [Save as type] in the dialog box.)

Ricoh Service Offices

3-2-3, Shin-yokohama
Kohoku-ku, Yokohama-shi
222-8530, Japan
http://www.ricoh.co.jp/r_dc

Ricoh Factory Service Center
3235 Sunrise Blvd.,
Suite2 Rancho Cordova,
CA 95742
<http://www.ricohzone.com/>

Ricoh Europe B.V.
Photo Products Division
P.O. Box 75640
1118 ZR Schiphol
The Netherlands
<http://www.ricoh-red.com/>
<http://www.ricoh-europe.com/>
E-mail:camera@ricoh.nl

Ricoh Europe B.V.
Düsseldorf Branch
Photo Products Division
Oberrather Straße 6
D-40472 Düsseldorf
Germany

Ricoh Photo Products (Asia), Ltd.
Unit D, E & F
24/F., China Overseas Building
139 Hennessy Road, Wan Chai
Hong Kong

Ricoh Australia Pty. Ltd.
8 Rodborough Road
Frenchs Forrest, N.S.W. 2086
Australia
<http://www.ricoh.com.au>



RICOH CO., LTD.

3-2-3, Shin-yokohama
Kohoku-ku, Yokohama-shi
222-8530, Japan
L2172553