

# Profoto

B1 500 AIR TTL



**BEST PROFESSIONAL  
LIGHTING SYSTEM**  
Profoto B1  
Off-Camera Flash

**WITH TTL  
WITHOUT CORDS** **B1**

# THE PROFOTO B1 OFF-CAMERA FLASH



## WITH TTL FOR NIKON & CANON



### OFF-CAMERA FLASH

Taking your flash off-camera marks a milestone on your journey to becoming a great photographer. It means you are ready to take control and shape light. You are no longer content simply depicting things. You want to create them yourself.

Now, there are many flashes out there that can be placed off-camera. But there

is only one B1. Keep reading and we will explain why.

### WITH TTL

The B1 is the world's first off-camera flash that can do TTL with both Nikon and Canon cameras. Nikon shooters attach the Air Remote TTL-N to their camera's hot shoe, Canon shooters the Air Remote TTL-C.

Both can merge camera and flash into one. Just point and shoot, and the B1 will automatically adjust its light output to provide you with the perfect exposure. It is as easy as it sounds. And manual control is always just a button press away.

### WITHOUT CORDS

Do you remember the feeling when you first learned how to ride a bicycle?

PHOTO: DAVID BICHO

PHOTO: JUSTIN & MARY

PHOTO: RICHARD WALCH

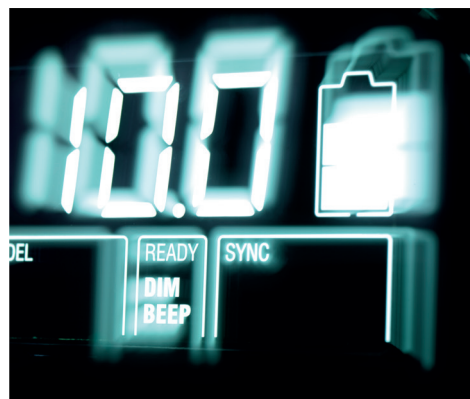
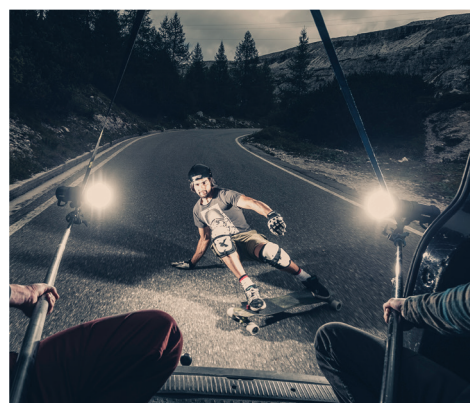
PHOTO: DAVID BICHO  
PHOTO: MICHAEL MUELLER



PHOTOS: MICHAEL MUELLER

PHOTO: DAVID BICHO

PHOTO: JEREMY SNELL



## WITH POWER TO OVERPOWER THE SUN



Remember how the world seemed to open up, how you were suddenly able to go anywhere and do anything? Then you know what it is like shooting with the battery-powered and wirelessly synced and controlled B1.

Shoot indoors or shoot outdoors, miles away from the nearest wall outlet. Place the lights wherever you want. Your imagination sets the limits. Not the

length of your cables.

### WITH POWER

Ever been frustrated by the fact that a clear sky equals bad weather for photography? Or perhaps you have experienced the opposite – not enough light to get the shot you want?

The B1 solves both these issues. Ten times as powerful as the average speed-

light, the B1 enables you to overpower the sun on a sunny day as well as light up larger backgrounds and areas. With the B1 you are no longer dependent on the weather or ambient light. You are the one in control. You set the light.





## FREEZE A MOMENT IN TIME



### WITH SPEED

You can never know when that perfect moment will happen in front of your lens. The only thing you can do is to always be prepared for when it occurs.

That is why speed is important. The B1 was designed with this in mind. At lower power settings it will easily keep up with your camera, blasting away up to twenty flashes per second.

Speed also equals short flash duration. With the B1, you will not only be able to catch the moment. You will also be able to freeze it in time with absolute sharpness.

### WITH LIGHT SHAPING

Photography is all about light – about controlling and shaping light. Shoot the same thing from the same angle with ten different lighting setups and you will

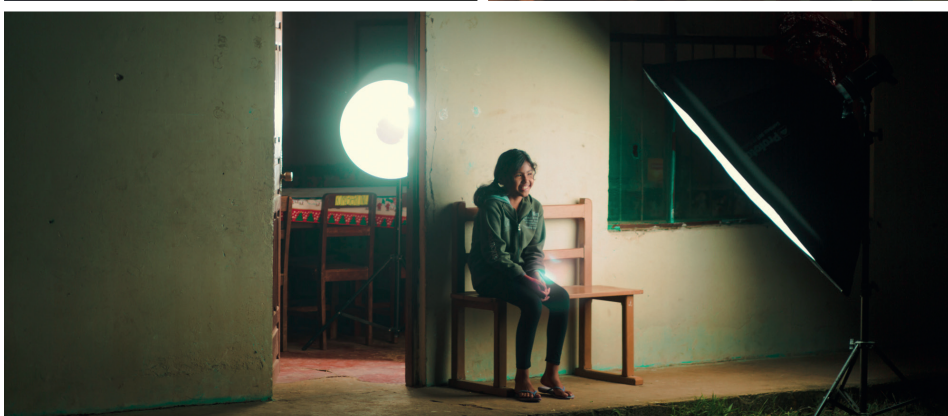
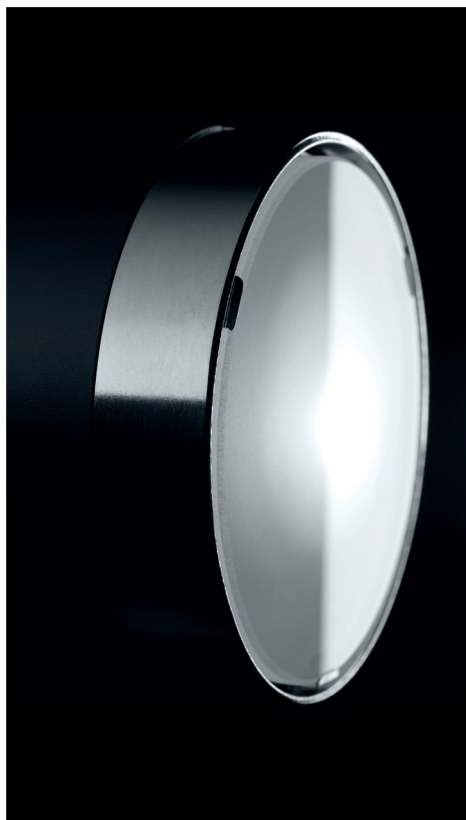
create ten different images.

This is where Profoto's Light Shaping Tools enter the picture. The B1's built-in reflector creates a wide and even light spread that stands well on its own. But you are also free to choose from more than 120 Light Shaping Tools and shape the B1's already beautiful light into almost any light you can imagine.





# TAKE CONTROL AND SHAPE LIGHT



## WITH QUALITY IN EVERY DETAIL

50 years as the brand of choice among leading photographers in the tough and demanding fashion industry have taught us to never leave any detail unattended.

That is why the B1 has a built-in reflector that not only maximizes the output but also protects the flash tube. That is why the stand mount is sturdy enough

to hold a 7-foot softbox. That is why the LED modeling light is power-efficient enough to also be used as video light. That is why the B1 has an integrated umbrella mount. That is why the crystal clear LCD display is easy on the eye and the ergonomic grip handle feels great in your hand.

The B1 is full of details such as these – details that make a huge difference.



# THE TEST



## WITH PORSCHE IN PRAGUE

German car photographer Frederic Schlosser drove from his hometown Frankfurt, Germany, to Prague, Czech Republic. Frederic drove a classic sports car from the 1970s, while his assistant drove a contemporary model of the same car.

In the trunk: Frederic's camera, his Profoto B1 Location Kit and a Softbox

RFi 1x4'. The Plan: shoot the two cars on location with the beautiful, old buildings in the background.

"I love fast cars," says Frederic. "I love good car design, and I love driving cars. That's why I got into car photography. It allows me to live out my two biggest passions in life!"

Shooting cars is challenging. Cars are

big, shiny and oddly shaped. Shooting cars on location is even more challenging. In Frederic's case, things were further complicated by the fact that he did not have a chance to scout the location beforehand.

"Luckily for us, working with the B1 is really fast and easy," says Frederic. "You don't need much time to prepare. In our case, we just drove around the





**"REALLY  
FAST AND  
EASY"**



city and stopped when we found a nice spot. The B1 Location Kit is also very compact. Everything fitted perfectly in the trunk of the car."

Time was of the greatest essence for Frederic and his team. They did not have permits for every location they found, so they had to get their shots as fast as possible.

"Working without any cords is a huge plus when shooting on location," says Frederic. "It allows you to be fast, spontaneous and efficient. Another awesome thing is the extremely good battery. A fully charged battery can power up to 220 full power shots. And when the battery runs out, I just swap it for one of the two spare batteries that come with the kit.

"Obviously, I also really love the Car Charger, which allows me to charge the batteries in the very car I'm shooting. I can't help but feel that this little thing was designed with me in mind..."

See more of Frederic's work at:  
[www.fredericschlosser.de](http://www.fredericschlosser.de)



# THE OFF-CAMERA FLASH SYSTEM



PHOTO: DAVID BICHO



PHOTO: SANDRA ÅBERG  
PHOTO: FREDERIC SCHLOSSER



## OFF-CAMERA FLASH SYSTEM

The B1 is part of Profoto's off-camera flash system, characterized by compact and cordless solutions with TTL. The system is constantly growing and evolving. Check Profoto.com for the latest news.

## B1 LOCATION KIT

The B1 Location Kit contains 2 x B1 off-camera flashes, 1 x tailor-made Backpack M, 2 x rechargeable Li-Ion

batteries, 1 x Fast Charger and 1 x Car Charger. Bring it with you wherever your creativity leads you. Who knows where it will take you?

## B1 500 AIR TTL KIT

Contains 1 x B1 off-camera flash, 1 x tailor-made Bag XS for protecting the flash during storage and transport, 1 x rechargeable Li-Ion battery and 1 x Battery Charger 2.8A.

## AIR REMOTE TTL-N & AIR REMOTE TTL-C

Nikon shooters attach the Air Remote TTL-N to their camera's hot shoe, Canon shooters the Air Remote TTL-C. Both get to shoot with TTL and without any cords. And manual control is always just a button press away.

## AIR REMOTE & AIR SYNC

The standard Air Remote and Air Sync





AIR REMOTE TTL-C



AIR REMOTE TTL-N



AIR REMOTE



AIR SYNC



B1 LOCATION KIT



B1 500 AIR TTL KIT



LI-ION BATTERY FOR B1



CAR CHARGER 1.8A



BATTERY CHARGER 2.8A



FAST CHARGER 4.5A

can be used to wirelessly control and sync the B1 from any camera with a hot shoe. There will be no TTL functionality, but the sensation of shooting without any cords is the same.

### BACKPACK M

Handy, high quality backpack that fits two B1 off-camera flashes plus accessories and two stands.

### BAG XS

Tailor-made case for protecting the B1 and its accessories during storage and transport.

### LI-ION BATTERY FOR B1

A spare battery will save you the trouble of having to worry about running out of power.

### BATTERY CHARGER 2.8A

Standard charger that fully recharges

the B1's battery in two hours.

### FAST CHARGER 4.5A

Optional fast charger that fully recharges the B1's battery in only one hour!

### CAR CHARGER 1.8A

Plugs into a standard car cigarette connector and recharges your B1 battery in just two hours.



# THE LIGHT SHAPING TOOLS



GRIDS



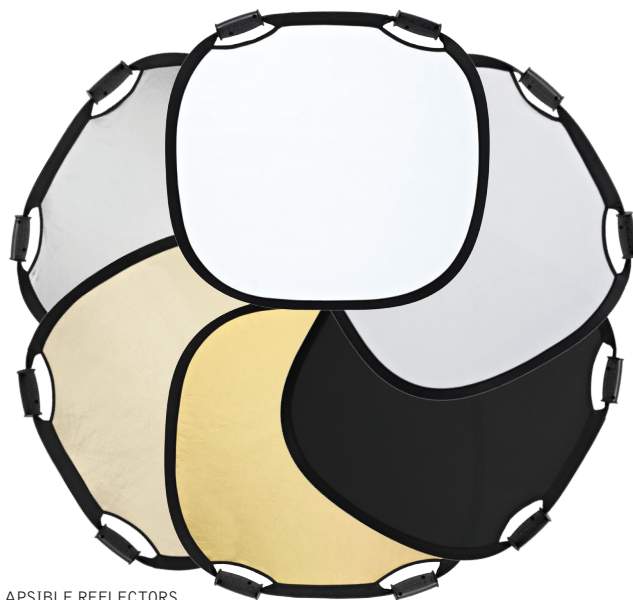
ZOOM REFLECTOR



MAGNUM REFLECTOR



SOFTLIGHT REFLECTOR KIT



COLLAPSIBLE REFLECTORS



RFI SOFTBOXES



UMBRELLAS

## LIGHT SHAPING TOOLS

Choose from more than 120 compatible Light Shaping Tools and shape the B1's already beautiful light into almost any light you can imagine. Here are some of the most popular.

### GRIDS

Mounts directly on to your B1 to create a more directed light and reduce the fall-off without changing the light character-

istics. Available in three versions.

### ZOOM REFLECTOR

A 40-year-old favorite still going strong. It takes its name from the fact that it allows you to shape its light by simply sliding the reflector back and forth on the flash head.

### MAGNUM REFLECTOR

Increases the B1's output by one f-stop

compared to the Zoom Reflector, but does so without excessively focusing the light beam. Great for on-location shoots in the sun!

### SOFTLIGHT REFLECTOR KIT

The Softlight Reflector creates a soft and flattering light with a pristine, natural look. Nicknamed "The Beauty Dish" by leading fashion photographers.





## B1 500 AIR TTL

Max energy: 500Ws  
Energy range: 9 f-stops (2-500Ws)  
Energy control increments: 1/10 or full f-stops  
Recycling time: 0.1-1.9 (Quick burst up to 20 flashes/second)  
Max modeling light (W): 20W LED (Output equivalent to 70W Halogen)  
Modeling light control: Off, Proportional, Free (5-100%)  
Mode control: Freeze (shortest flash duration) or Normal (color balanced) mode  
Flash duration Normal mode (t0.5): 1/11,000s (2Ws) - 1/1,000s (500Ws)  
Flash duration Freeze mode (t0.5): 1/19,000s (2Ws) - 1/1,000s (500Ws)  
Energy stability Normal mode: + -1/20 f-stop flash to flash  
Energy stability Freeze mode: + -1/20 f-stop flash to flash  
Color stability Normal mode: + - 150K over range; + -20K flash to flash  
Color stability Freeze mode: + - 800K over range; + -50K flash to flash  
Guide number @ 2 m, 100 ISO with Magnum Reflector: 45 2/10  
Input power supply: Exchangeable Lithium-Ion Battery 14.4V/3Ah  
Battery capacity: Up to 220 full power flashes

## SYNCHRONIZATION AND CONTROL

Sync socket(s): 1  
Wire sync voltage: Compliant to ISO 10330 standard  
Wire sync connector: 3.5mm Mini-Phono  
Photocell/IR-slave and switch: Yes  
Radio sync & control: Yes, Built in AirTTL supporting wireless sync, control and TTL. (Requires Air Remote TTL. Sold separately.)  
Radio sync range: Up to 300m (1000ft)  
MAC/PC control: Yes, via optional Profoto Air USB transceiver and Profoto Studio software.

## MISCELLANEOUS

Function display: Multifunction LCD display  
Fan cooling: Yes, thermally controlled fan speed for low noise level.  
Ready signaling: Yes, ready lamp, dim and/or switchable beep sound.  
Auto dumping: Yes  
USB interface: Yes, USB Mini port for FW upgrading.  
Quick burst: Quick burst capability of up to 20 flashes per second.  
Weight: 3KG (6.6LBS) (Including batteries)  
Dimensions: Length 31CM (12.2"), height 21CM (8.3"), diameter 14CM (5.5").



## AIR REMOTE TTL-C

Frequency band: 2.4 GHz  
No of frequency channels: 8  
No of remote/TTL control groups per channel: 3 (A-C)  
Operation modes: TTL & Manual  
TTL compatibility: Canon E-TTL II  
Wireless range: Normal sync up to 300 m (1000 ft),  
Remote control and TTL sync up to 100m (330ft).  
Battery type: 2 x AAA (Alkaline)  
Typical battery lifetime: 30 hours  
Antenna type: Integrated  
Auto power off: Yes, 30 min of inactivity.

## MOUNT & CONNECTIONS

Camera mount/Sync in: Canon hot shoe only  
FW upgrade: USB Mini

CANON

## SUPPORTED AIR FUNCTIONALITY

Sync/Trigger: Yes, triggers Air Remote & Air Sync transceivers plus all Profoto flashes with AirS, Air or AirTTL support.  
Remote control: Yes, remote/group control for all Profoto flashes with Air or AirTTL support.  
TTL control: Yes, TTL group control for all Profoto flashes with AirTTL support.



## AIR REMOTE TTL-N

Frequency band: 2.4 GHz  
No of frequency channels: 8  
No of remote/TTL control groups per channel: 3 (A-C)  
Operation modes: TTL & Manual  
TTL compatibility: Nikon iTTL  
Wireless range: Normal sync up to 300 m (1000 ft),  
Remote control and TTL sync up to 100m (330ft).  
Battery type: 2 x AAA (Alkaline)  
Typical battery lifetime: 30 hours  
Antenna type: Integrated  
Auto power off: Yes, 30 min of inactivity.

## MOUNT & CONNECTIONS

Camera mount/Sync in: Canon hot shoe only  
FW upgrade: USB Mini

NIKON

## SUPPORTED AIR FUNCTIONALITY

Sync/Trigger: Yes, triggers Air Remote & Air Sync transceivers plus all Profoto flashes with AirS, Air or AirTTL support.  
Remote control: Yes, remote/group control for all Profoto flashes with Air or AirTTL support.  
TTL control: Yes, TTL group control for all Profoto flashes with AirTTL support.

## RFi SOFTBOXES

An RFi softbox is more than a softbox – it is a Light Shaping Tool. Choose from twelve unique models and four different shapes. Add a Softgrid for even more precise light shaping.

## UMBRELLAS

When it comes to portability and ease-of-use, there are not many tools that can beat a Profoto Umbrella. Available in 18

models, four sizes, two shapes and three fabrics.

## COLLAPSIBLE REFLECTORS

Bounce flash light or shape sunlight with one of our ten Collapsible Reflectors, each equipped with two ergonomically shaped handles that make them easy to hold and fold.





PHOTOS: Top-right: Justin & Mary. Top-left: David Bicho. Bottom-right: Jeremy Snell. Bottom-left: Frederic Schlosser. PHOTO FRONT: David Bicho. DESIGN: Kamis.se. Specifications are subject to change without notice. Profoto 2014.

## THE B1 OFF-CAMERA FLASH

We call the B1 an off-camera flash because it is not a speedlight and it is not a monolight. It is a new kind of flash that brings a whole new way of shooting. "Once you try it, it changes everything," said Richard Walch, the first photographer who tried it. We believe that's true.

Stay connected and learn more about light shaping! View more of our products on [www.profoto.com](http://www.profoto.com)



 **Profoto**<sup>®</sup>  
The Light Shaping Company<sup>™</sup>